



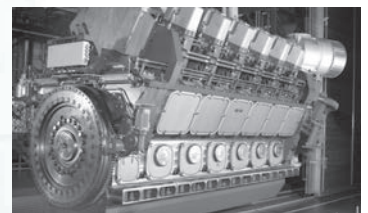
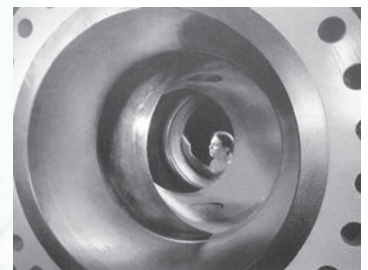
## The LHF Gear series

When it is all about the accurate measurement of large gears or other high precision parts, offers the LHF Gear high flexibility concerning ergonomics of the measuring volume. The at-grade design realizes excellent free moving space and easy loading of the measuring volume. Further more the LHF Gear is due to its design ideal for the measurement of internal gears.

The LHF Gear is equipped with a rotary table for the precise 4-axes-measurements of gearings. So gears and other rotationally symmetrical parts with a diameter larger than 4000 mm can be measured.

Additionally to the functionality of a gear measuring machine, prismatic parts can be measured fast, precise and fully automated. With the proven measuring software Metrosoft CM measuring programs can be

created and measurement report generated. The results are stored to a database and can be recalled anytime and be used for statistical evaluations. This combination allows not only the measurement of gears but the measurement of corresponding gear housings as well.



## Technical data

		LHF 3020 Gear
Work piece diameter [mm]		5 - 3000
Modul range [mm]		1 - 32
Measurable face width [mm]		1950
Measurement accuracy		Gear inspection according to VDI/VDE 2612/2613, Group I (with a maximum variation of the reference temperature +/- 2K)
Measurement uncertainty acc. to DIN EN ISO 10360 for 3D-measuring tasks		$MPE_E = 5,0 + L/350$ $MPE_P = 5,0$ $MPE_{THP} = 5,6$
		18-22 °C, ΔT: 01 K/h, 1 K/m, 2 K/d
Travel range [mm]	X	3000
	Y	4000 (5000, 6000)
	Z	2000
Rotary table loading [daN]		8000 <sup>1</sup>
Dimensions [mm]	L	6650 (7650, 8650)
	W	4900
	H	5500

<sup>1</sup> Additional supply for hydrostatic rotary table necessary.  
Other rotary table sizes on request.

